

EuroCoppice

Innovative management and multifunctional utilization of traditional coppice forests

Gero Becker

Faculty of Forest Science, University of Freiburg

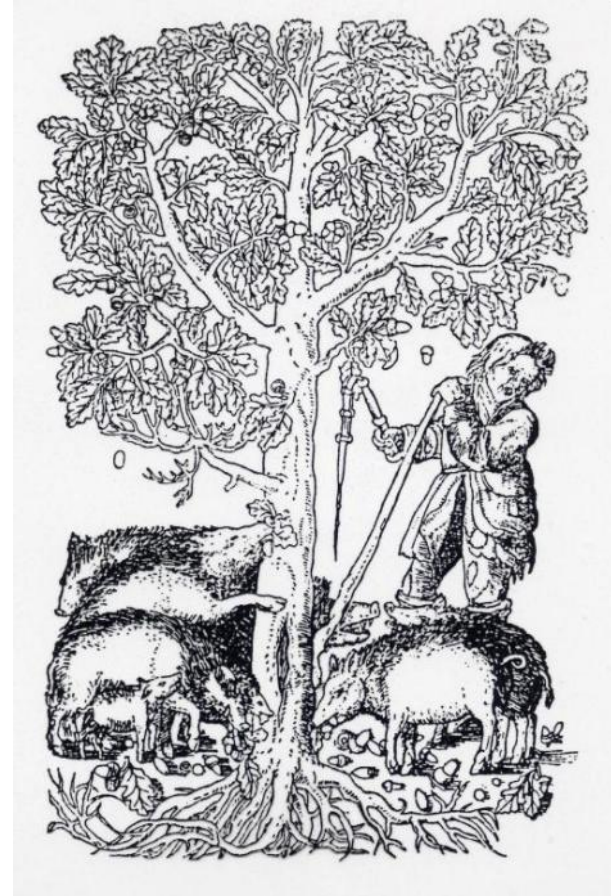
Firenze, February 26, 2014

UNI
FREIBURG



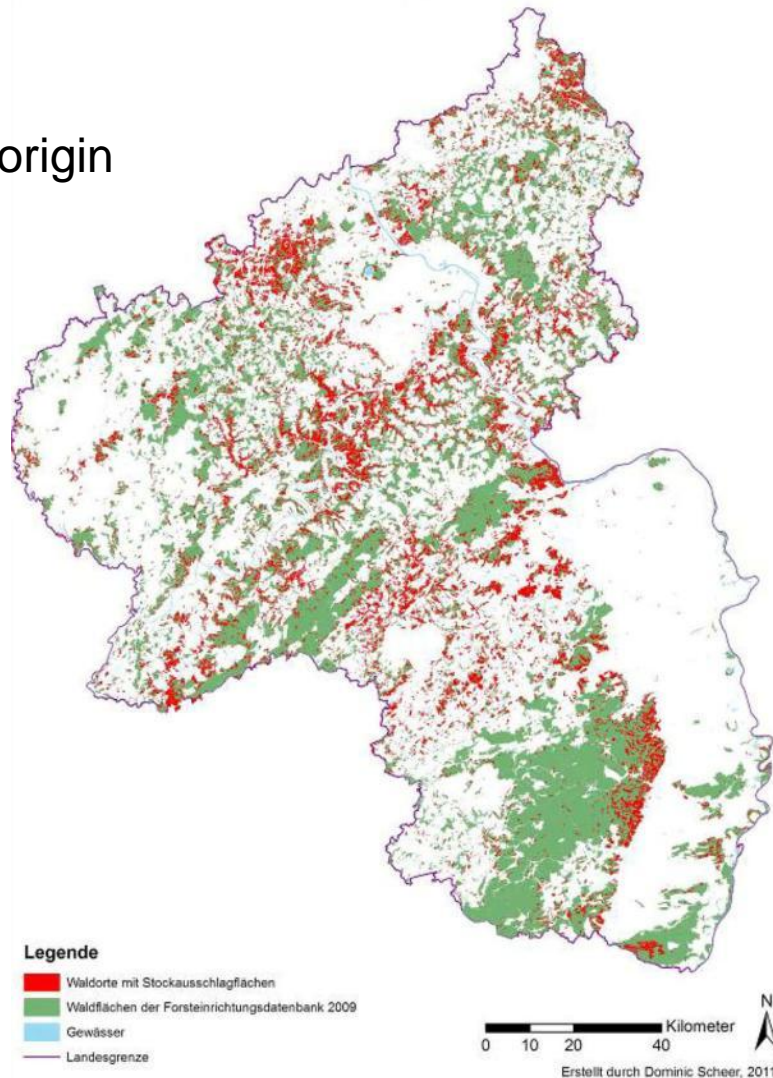
History

- Sustainable forest management regime developed since more than 1,000 years
- Widespread throughout Europe and worldwide
- Based on ecological mechanisms
- To fulfill a broad range of societal needs



History

Rhineland-Palatinate:
20% forests of coppice origin





Rhine valley



Coppice of different age

Ecology

- Broadleaved trees with high vegetative potential and long lasting root system
- Vigorous growth in the first years
- Resistant or favorable to (small) clearcuts
- Low vulnerability, high resilience
- Co-existence with farming
- Broad range of management and utilization options



Ecology



Oak coppice

Ecology



Very poor oak coppice

Ecology



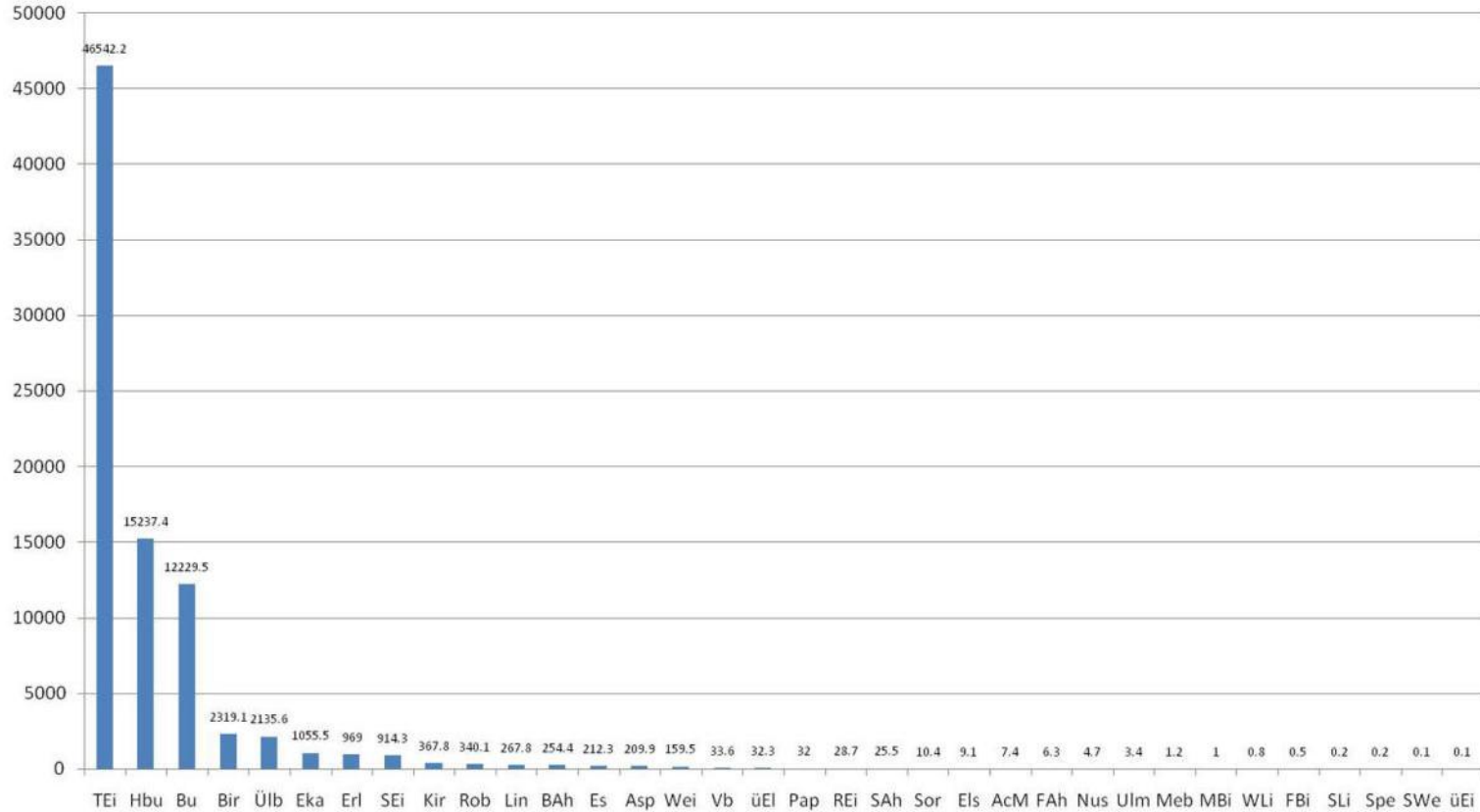
Lime tree coppice

Ecology



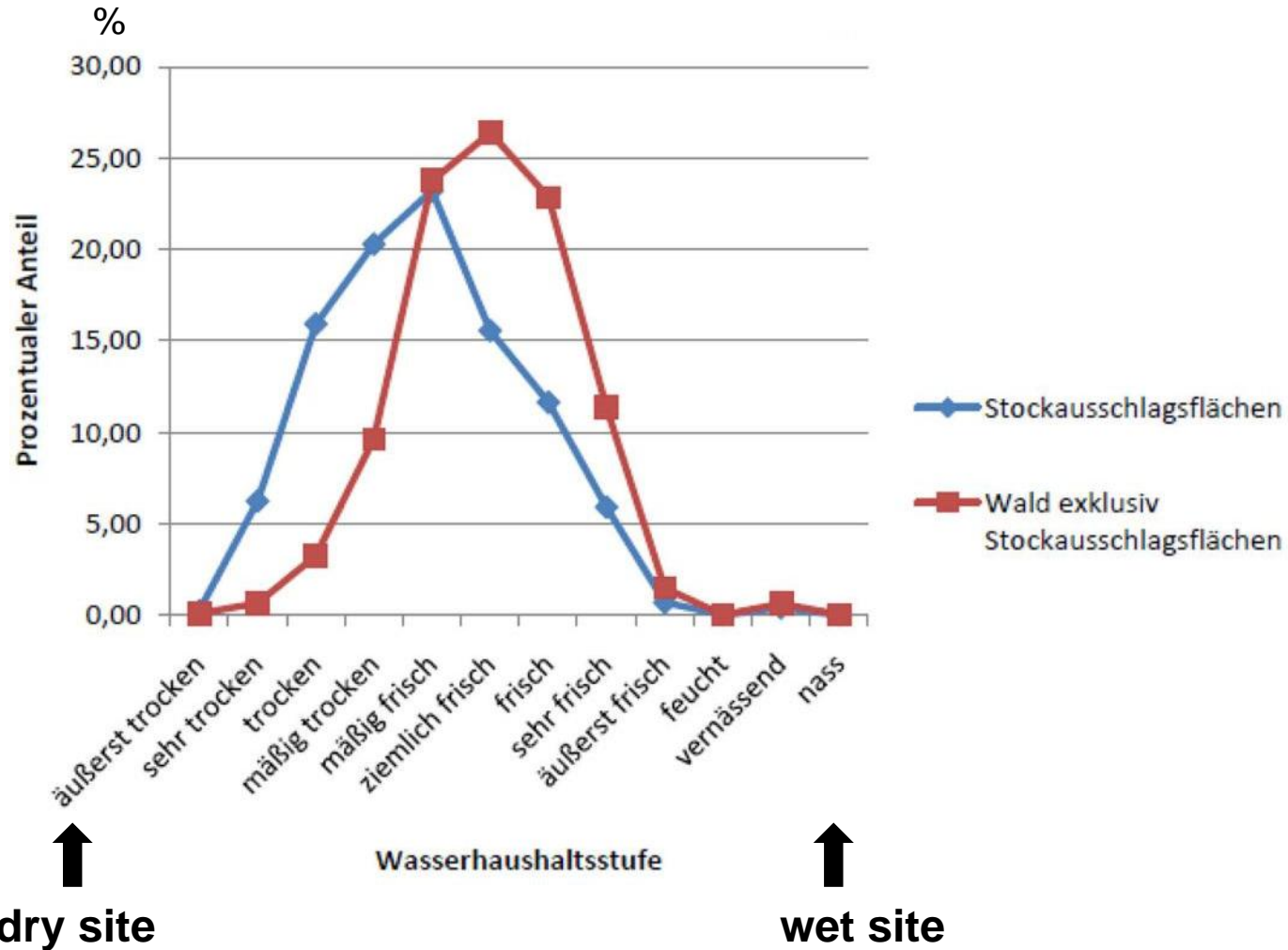
Chestnut coppice

Ecology



Coppice area (ha) by species (Rhineland-Palatinate)

Ecology



Societal aspects

- Closely linked to villages and farmland
- Small-scale or common ownership
- “Democratic” user regimes
- “The Forest of ordinary people”
- Misperceived by
 - Big land holders
 - Modern forest industry
 - Forest science



Coppice utilization



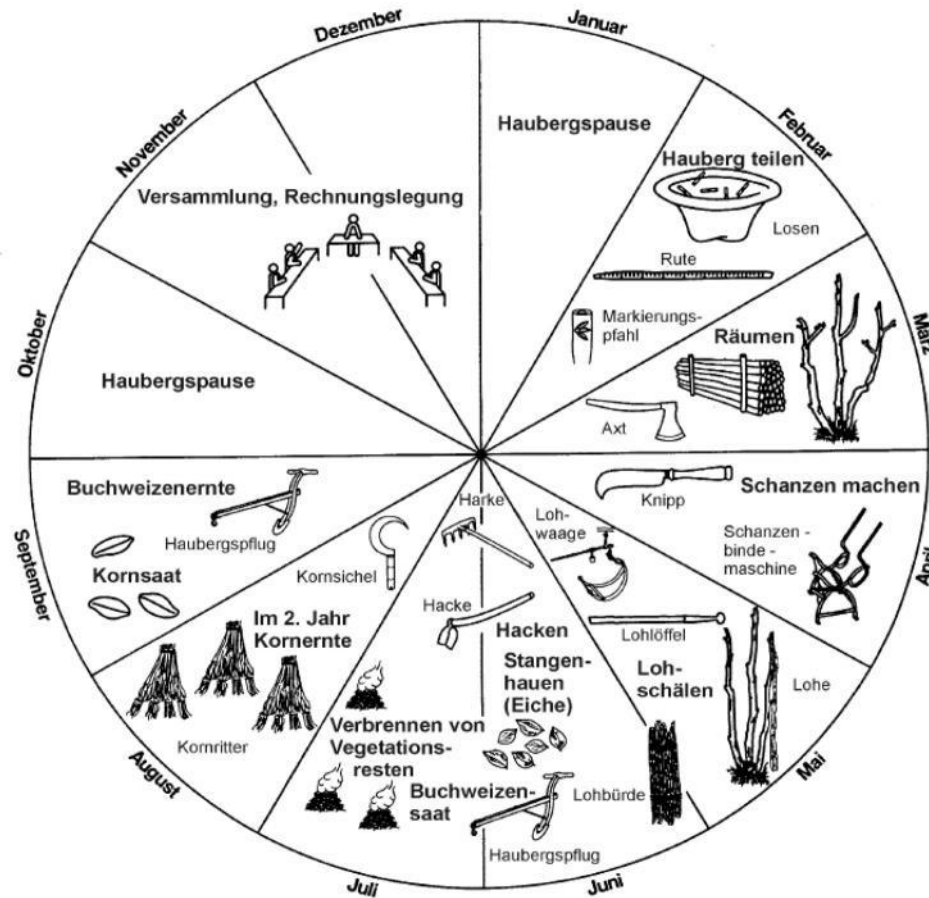
Typical coppice small clearcut

Coppice utilization



Traditional harvest

Coppice utilization



Traditional coppice activities during the year

Coppice utilization



Traditional sign

Coppice utilization



Traditional bark harvest for tanning

Coppice utilization



Bark harvest in Luxembourg

Coppice utilization



Motormanual felling

Coppice utilization



Tractor skidding

Coppice utilization



Fully mechanized harvest

Status and perception of coppice forests

In the last decades:

- Neglected
- Over-aged
- Abandoned
- Converted
- Undervalued
- „Old fashioned“



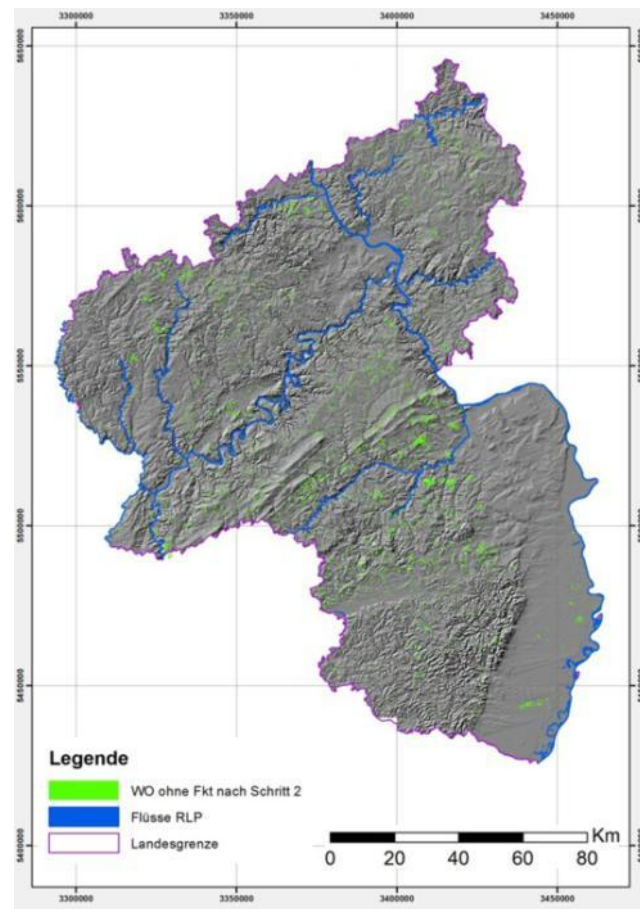
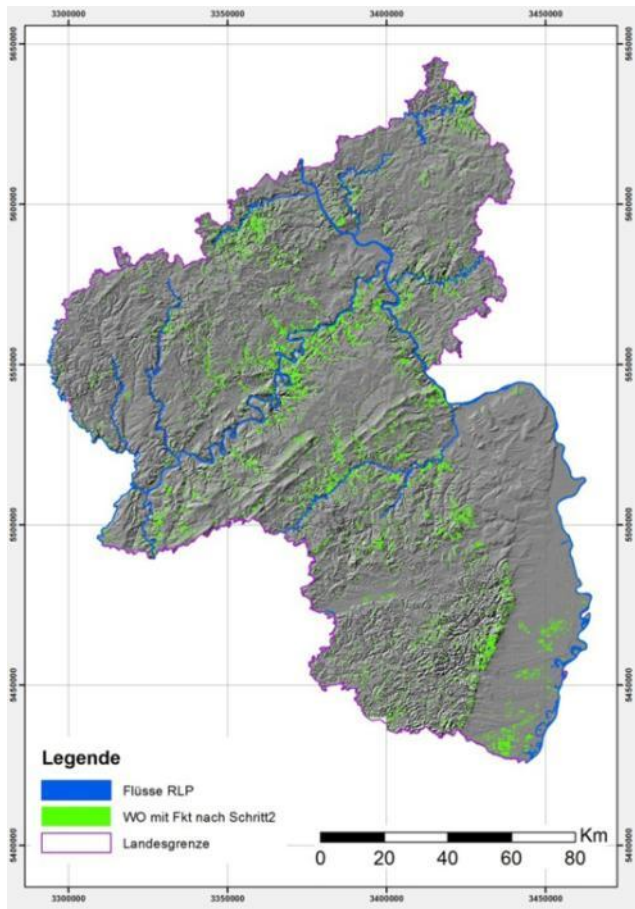
Status and perception of coppice forests

„New appreciation“:

- Biodiversity
- Protection of landscape, water and soil
- Energy wood
- Recreation
- Climate change

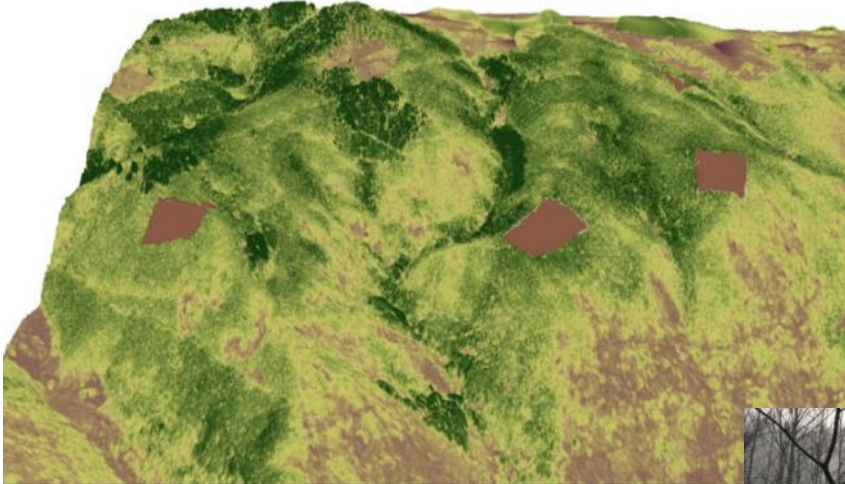


Protection function of coppice



Coppice with and without protection function

Coppice in the landscape



Small clearcut simulation GIS/LIDAR based

Why a COST action?

- Interesting and relevant for many countries
COST and Non-COST countries (Near Neighbour Countries, International Partner Countries)
- Broad and diverse knowledge exists, but scattered and not compiled yet
- EuroCoppice opens a holistic/interdisciplinary view on forests and people
 - History
 - Ecology
 - Utilization
 - Nature conservation and protection
 - Governance
 - Forest policywhich is attractive for young generation researchers
- Information and networking will increase awareness and stimulate further coppice related R&D activities, capacity building and scientific exchange

Proposal

Focus:

- Compile and evaluate existing coppice-related knowledge
- Identify institutions and capacities with competence and interest in Coppice Forest Management (CFM)
- Establish networks: interdisciplinary and transdisciplinary
- Identify knowledge gaps, stimulate and focus research proposals
- Involve young researchers in coppice issues
- Contribute to a European Coppice Forest Policy

COST Formats

- Meetings
 - Management committee (MC)
 - Steering group (core group) (SG)
 - Working groups (WG)
- Workshops and conferences
- Training schools
- Short term scientific missions (STSM)

Conferences

Today:

- START-UP- Conference 26.02.2014 in Florence
“Status of coppice in the European context”

Planned:

- Conference on silviculture & nature conservation
- Conference on utilization and products
- Final conference: governance, policy and overall results



Pictures: Fobawi & BOKU

Training schools

6 training schools
(1 per WG + 1 cross section)



Pictures: Fobawi, FP 0902, Probiopa/ Schnitzler

1st Training School of FP 1301,
University of Sarajevo, Faculty of Forestry
Sarajevo, Bosnia and Herzegovina



COST ACTION FP 1301 EuroCoppice

COST Training School
Silviculture of coppice beech forests - from traditional forest management to conversion in high forest
01.07.2014 – 06.07.2014

Background
Using wood as a source for energy has a long tradition. During the last decades also the industrial countries rediscovered wood from forests for energy as an economical energy source alternative. The production goals of a forest influence the type of forest management. Particularly the production of firewood, which was the main product of forests for millenniums, is linked to special forms of silviculture concepts.
Coppice and coppice with standards are traditional management concepts that are still widely distributed in some European countries. At present, modern forms of biomass production with short rotation plantations of fast growing tree species are increasingly important.
This course focuses on how to establish and manage coppice stands considering economical and ecological aspects.

Objectives and Learning Outcomes

- To provide knowledge about traditional forest management systems, history, current importance and future perspectives of coppice forests.
- Demonstrate different silviculture systems for coppices and analyze benefits and disadvantages.
- Train student in applying forest management concepts in order to improve coppice of European beech.

Chair of the COST Action:
Prof. Dr. Dr. h.c. Gero BECKER
Albert-Ludwigs-University Freiburg
Chair of forest utilization (Sobek)
Weinmattenstr. 9
D-79085 Freiburg
Tel.: +49 / 761 / 303-37 64
eurocoppice@forst.uni-freiburg.de





find the Call at:

www.eurocoppice.uni-freiburg.de

Short Term Scientific Missions (STSMs)



Pictures: Fobawi



Cost Action FP1301 - EuroCoppice

Short Term Scientific Missions

Are you interested in silviculture or harvesting of traditional or short rotation coppice?

Do you want to learn more about other research institutes, countries or cultures?

Are you ready to extend your professional network?

If your answers to the above questions are positive, then a Short Term Scientific Mission is right for you! Choose from 27 European Countries, and until June 2014 also from New Zealand, South Africa and Argentina (to be confirmed) for a unique chance to learn something new, study a novel method or apply your knowledge in a different working environment.



All this is possible through:

Cost action FP1301
"Innovative management and multifunctional utilization of traditional coppice forests - an answer to future ecological, economic and social challenges in the European forestry sector (EuroCoppice)"

1st Call for STSM

Contact:
STSM Coordinator
Pietar D. Kofman
email: pdikofman@gmail.com

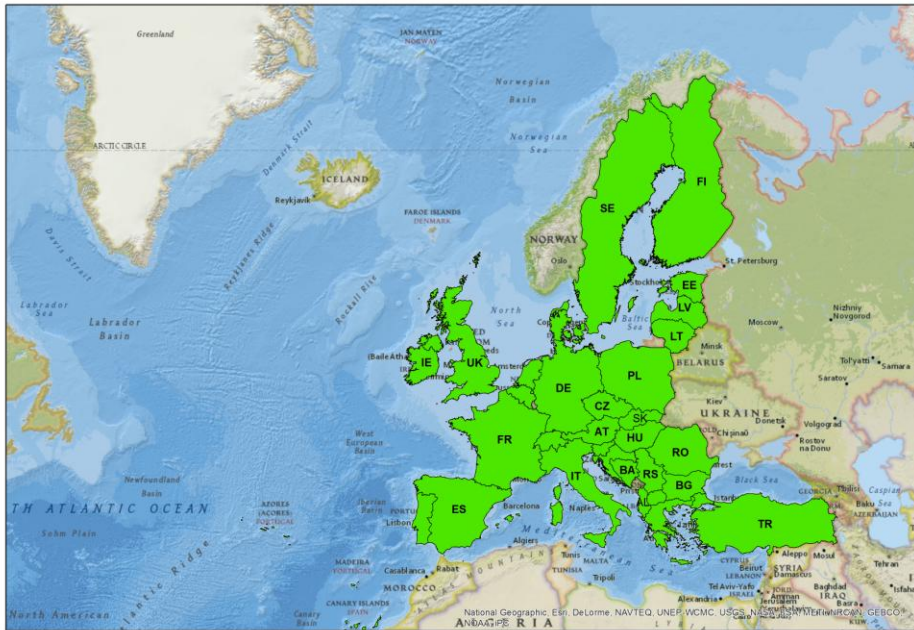
STSM Vice coordinator
Enrico Marchi
email: enrico.marchi@unifreiburg.de



EUROPEAN COOPERATION
IN SCIENCE AND TECHNOLOGY

find the Call for STSM at:
www.eurocoppice.uni-freiburg.de

Overview participating COST- countries



approved:
30 cost countries
1 near neighbour country (AL)

under approvement:
South Africa
(Stellenbosch & Nelson Mandela Uni)

request: Ukraine

Participating cost countries in FP 1301

EEP comments and questions

Adding Near Neighbor countries

- IUFRO and related units have been informed and encouraged to participate
- FAO representatives have been contacted and asked to identify relevant partners
- National research networks have been activated



Thank you and please get involved with EuroCoppice!

Gero Becker

Chair of Forest Utilization

phone: +49 761 203 37 64

e-mail: gero.becker@fobawi.uni-freiburg.de

COST: eurocoppice@fobawi.uni-freiburg.de

website: www.eurocoppice.uni-Freiburg.de